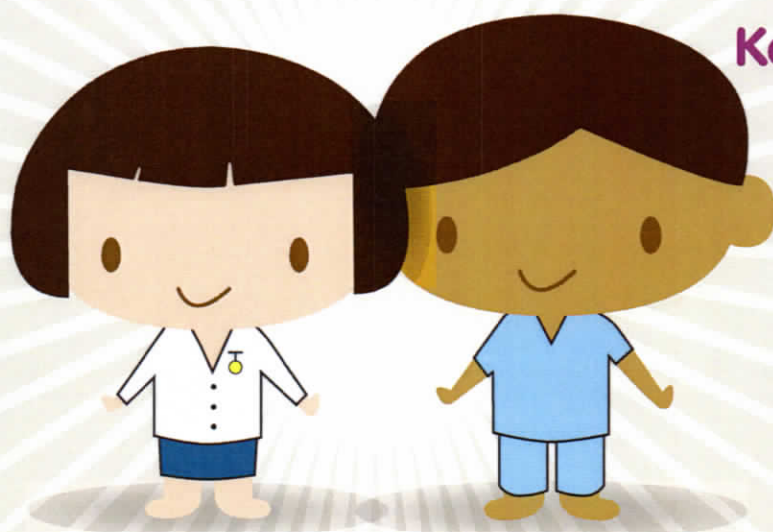


Your School Nursing Service

Someone you know and can trust...



Your School Nursing Service can work both in and out of School to help provide or find you support about:

Keeping Healthy

Immunisations

Emotional Health

Weight Management

Sexual Health

Drugs and Alcohol

Smoking

We can also help make sure that young people with disabilities, long term illness, or other needs can receive extra support when they need it. If we can't provide the help ourselves, we will connect you with someone who can.

Confidential

We provide a confidential service. This means that you can discuss personal information in confidence. We will not discuss your personal information with anyone else without your permission. This includes parents and teachers. We would only pass on your information in order to protect you or someone else from serious harm. Whenever possible we would discuss this with you first.

Qualified

School Nurses or Specialist Community Public Health Nurses are qualified nurses or midwives with specific graduate level education, and work with a team to support you.

Non Judgemental

We are here to help, not to judge.

When and Where can I Access my School Nursing Service?

SESSIONS ARE HELD AS FOLLOWS:

From 15:30 – 16:30

1st Tuesday of the month at Treehouse
and

3rd Thursday of the month at
Meadows